

## Integrated Acute Services Building (IASB) Construction fact sheet – July 2020

The NSW Government is partnering with UNSW Sydney to strengthen the Randwick Hospitals Campus through the integration of health education, training and research with acute healthcare services as part of the Randwick Campus Redevelopment (RCR).

Over \$778M is being invested in the new Prince of Wales Hospital Integrated Acute Services Building (ASB) that will enable clinical innovation and research, biomedical engineering, and clinical translational research laboratories to be collocated directly alongside clinical staff providing acute healthcare services to support the rapid translation of clinically informed research to improve patient care at Randwick.

Construction of the new hospital building is well underway with excavation, site remediation and underground services complete in the south-east corner of the RCR site. Construction of the main building structure is coming out of the ground marking a significant milestone for the project.



*Aerial view of the Randwick Campus Redevelopment construction site showing commencement of main building structural works.*

## Construction update

### Building structure construction

Structural works, including formwork, steel fixing and concrete pouring and finishing work, to establish each level of the new building is progressing well. Over 25,000m<sup>3</sup> of concrete will be poured including 155 major pours during delivery of the new building. The top floor, which includes a new helipad, is expected to be reached in early 2021.

Visible from outside the site compound is the main lift core jump form that provides the main structural core of the building, fire escapes, stairwells and passenger lifts. As building works progress each level will be enclosed with exterior panelling and glass.

### Services infrastructure upgrades

Major services infrastructure upgrades have been underway since construction commenced in 2018. Significant long-term improvements have been made to the site's sewer, stormwater and high voltage electricity capacity. These upgrades will provide the Integrated ASB and future stages of the redevelopment with greater capacity to accommodate the new facilities as they move from construction to operation.

For more information

 **Community Contact 1800 571 866 (24hrs)**

 [randwickcampusredevelopment@health.nsw.gov.au](mailto:randwickcampusredevelopment@health.nsw.gov.au)

 [www.randwickcampusredevelopment.health.nsw.gov.au](http://www.randwickcampusredevelopment.health.nsw.gov.au)

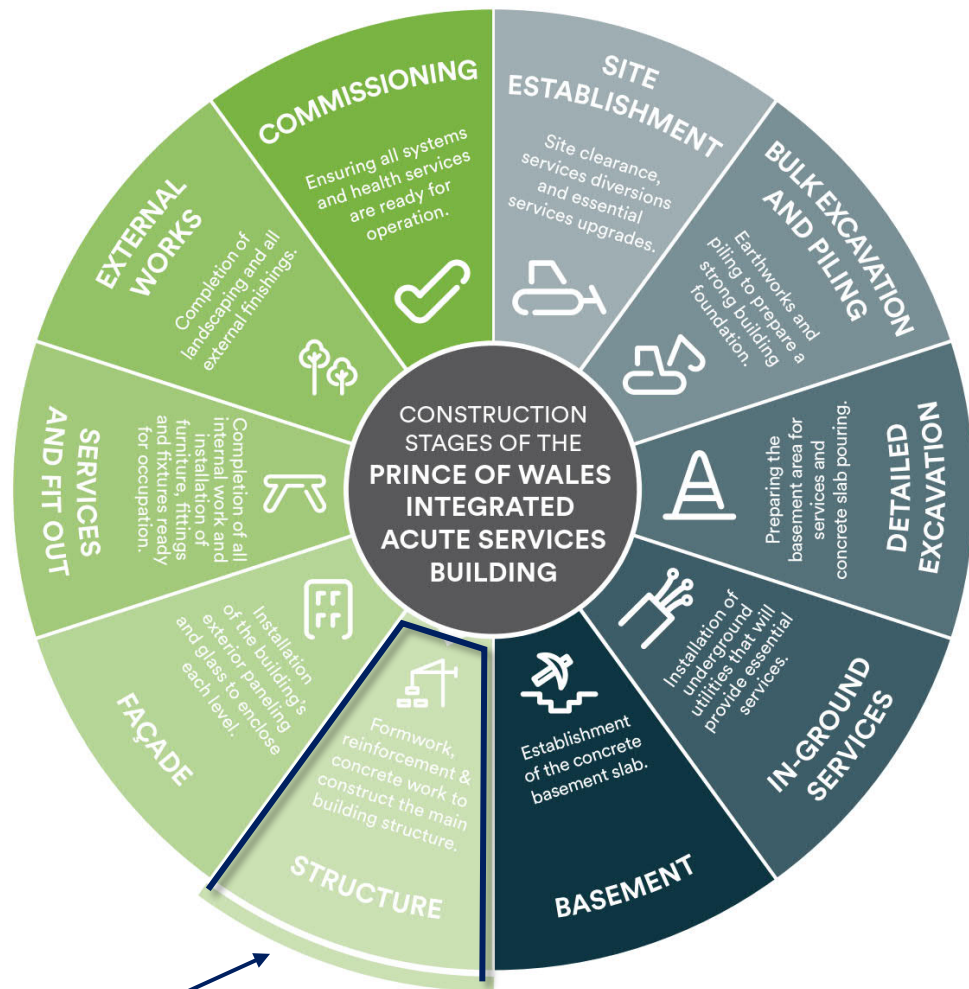
### Minimising local parking impacts

A unique partnership has been established with the Royal Randwick Racecourse to provide site workers with access to an offsite parking facility. At its peak the Integrated ASB workforce will include approximately 600 construction workers, and this arrangement will help ensure parking remains available for Hospital staff, visitors, patients and the local community. All site workers are encouraged to utilise public transport as a sustainable travel option that minimises impacts on the local road network.

### Construction lookahead

The following construction activities will be carried out to deliver the Integrated ASB:

- Hospital Road lowering
- Structural concrete works, including formwork, steel fixing, concrete pouring and finishing work
- Installation of the building's external panelling and glass
- Connection of services into the main building
- Fit out including installation of fixtures, furniture and equipment
- Installation of final bridge links, landscaping, and building commissioning
- Operational commissioning
- Clinical units transition from the existing Prince of Wales Hospital into the Integrated ASB



Construction progress diagram showing current structure stage of construction. The IASB is scheduled for completion in 2022.

### Managing construction work

All major construction projects like the Randwick Campus Redevelopment comply with strict environmental and planning controls. During construction of the Integrated ASB we will work closely with all stakeholders as part of our commitment to zero unplanned disruptions. We are working closely with the Randwick Hospitals Campus, Emergency Services, Transport for NSW, UNSW Sydney and Randwick City Council to coordinate construction in the Randwick Precinct.

#### Sign-up for E-Updates!

Please register your email address and/or phone number with us so we can keep you up to date on upcoming works and changes in the area. Phone: 1800 571 866 (24hrs) | Email: [randwickcampusredevelopment@health.nsw.gov.au](mailto:randwickcampusredevelopment@health.nsw.gov.au)

For more information

 Community Contact 1800 571 866 (24hrs)

 [randwickcampusredevelopment@health.nsw.gov.au](mailto:randwickcampusredevelopment@health.nsw.gov.au)

 [www.randwickcampusredevelopment.health.nsw.gov.au](http://www.randwickcampusredevelopment.health.nsw.gov.au)

### **Maintaining Randwick Hospitals Campus access**

Pedestrian, disabled, emergency services and vehicle access to the Hospitals Campus and car park will be maintained at all times during each stage of construction, including the lowering of Hospital Road. Continuity of access will be maintained through vehicle and pedestrian diversions. Hospital Road will be closed to through-traffic during key stages of construction and road lowering.

Traffic control, signage and an automatic traffic light system will be in place to manage the safe and coordinated movement of vehicles. 24-hour access to ambulance drop off areas will be strictly maintained.

### **Dust**

Managing dust is a key primary focus of the project - controls to manage dust, include:

- Air quality monitoring
- Applying water sprays to material stockpiles and use of water carts to dampen work areas
- Installation of wheel cleaning grids and wash down facilities as site entry and exit points
- Installing a solid continuous site hoarding
- Limiting stockpile height and covering stockpiles
- Installation of vent coverings to air intakes within the Hospitals Campus.

### **Noise and vibration**

Controls to manage noise and vibration include:

- Noise and vibration monitoring
- Selection of equipment and machinery that mitigates noise and vibration
- Scheduling of noisy work activities during daytime hours
- Respite periods for high noise generating activities
- Compliance with standards for noise and vibration management.

### **Waste management**

Our supply chain is committed to maintaining a clean, clear and safe working environment. Rubbish bins will be provided on all work areas and be emptied at regular intervals. Waste generated by the site will be delivered to a waste management facility for processing. Material that is suitable for re-use will be recycled.

## **Site management**

### **Extended working hours**

The Randwick Campus Redevelopment (RCR) continues to implement additional measures aimed at slowing the spread of COVID-19. Additional measures include physical distancing, rigorous and increased cleaning regimes, hygiene education and extended work hours with staggered start times.

Extended hours are a temporary measure to improve worker safety and ensure crucial works on health facilities can proceed during COVID-19. The following construction hours will be implemented at the RCR project site; Monday to Friday, 6:00am to 10:00pm and Saturdays, 7:00am to 5:00pm.

Additional mitigation measures will be in place to manage impacts of extended work hours including scheduling of high noise generating works in standard work hours, careful positioning of lighting and managing construction delivery times to minimise disruption to neighbouring residents and businesses. Extended work hours are implemented in response to directions and approvals from the NSW Government.

For more information

 **Community Contact 1800 571 866 (24hrs)**

 [randwickcampusredevelopment@health.nsw.gov.au](mailto:randwickcampusredevelopment@health.nsw.gov.au)

 [www.randwickcampusredevelopment.health.nsw.gov.au](http://www.randwickcampusredevelopment.health.nsw.gov.au)

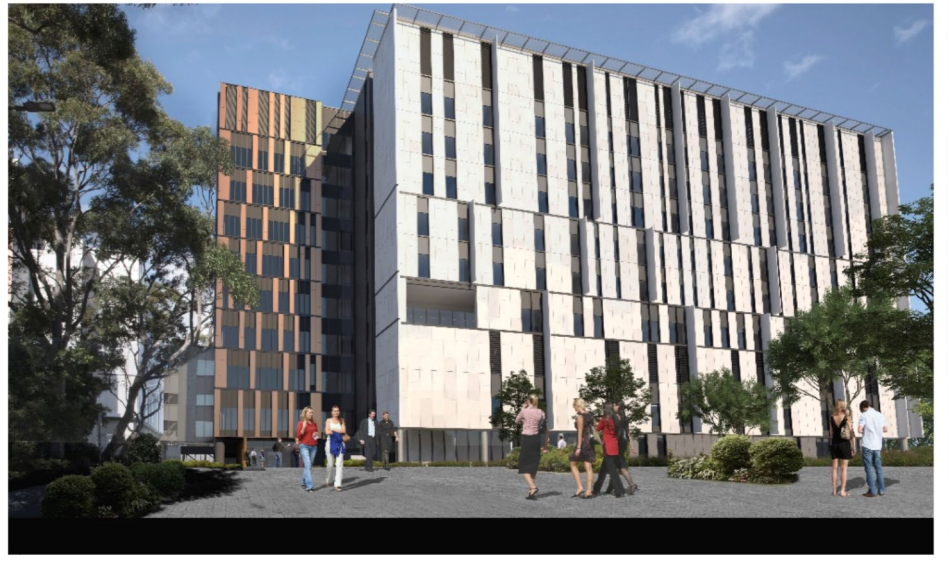


### Site security

The site perimeter will be secure at all times with no unauthorised access permitted. Access will be strictly controlled by the project team and through a secure gate system. Security patrols will be in place during periods of non-work and holiday periods.

### Construction workforce

Our construction team are visitors in both a hospital and residential community setting and therefore will continue to make every effort to minimise any impacts including on local parking and amenities. All site workers are inducted to understand their obligations when working on the Randwick Campus Redevelopment site, including, being highly aware of their presence within the Randwick community and hospital precinct. Site workers are provided with dedicated worker amenities and facilities.



*Artists impression of the Integrated Acute Services Building (IASB) shown from High Street*

### Ensuring public safety

The health and safety of patients, families, visitors, staff, construction workers and the community is our top priority. The construction site is surrounded by a secure A-class hoarding. Hoardings are a protective structure designed and installed to allow safe pedestrian, cyclist and vehicle movement around the site vicinity. The hoarding will help minimise dust and noise and create a visual barrier between work areas and the Hospitals Campus and surrounding streets.

Privacy screening will be installed on the main structure as it progresses to create a barrier of sight lines into the Hospitals Campus and neighbouring buildings. As part of our social distancing measures during COVID-19, we are limiting door-knocking local properties about upcoming works. For the safety of the community and our workers, please register your email and/or phone number with us so we can keep you up to date on upcoming works and changes in the area. **Phone:** 1800 571 866 (24hrs) **Email:** [randwickcampusredevelopment@health.nsw.gov.au](mailto:randwickcampusredevelopment@health.nsw.gov.au)

|   |   |   |  |  |   |   |
|---|---|---|--|--|---|---|
|  <p><b>Worker and community safety</b><br/>No.1 priority</p> |  <p><b>Monitoring health and COVID-19 symptoms</b></p> |  <p><b>Good personal hygiene practice and requirements</b></p> |  <p><b>Maintaining social distancing in and around site</b></p> |  <p><b>Worker segregation and contact record keeping</b></p> |  <p><b>Extended site work hours and altered work schedules</b></p> |  <p><b>Increased cleaning and sanitation regimes</b></p> |
| <p><b>The health and safety of Hospital staff, families, visitors, and the local community remains our top priority</b></p>                     |   |   |  |  |   |   |

For more information

 **Community Contact 1800 571 866 (24hrs)**

 [randwickcampusredevelopment@health.nsw.gov.au](mailto:randwickcampusredevelopment@health.nsw.gov.au)

 [www.randwickcampusredevelopment.health.nsw.gov.au](http://www.randwickcampusredevelopment.health.nsw.gov.au)