

## Newsfeed No. 37

May 2022



### Big ideas to accelerate Randwick Health Precinct partnership

Leaders from UNSW Sydney, South Eastern Sydney Local Health District, Sydney Children's Hospitals Network and Health Infrastructure explored how together their organisations can boldly and creatively address society's wicked health problems through the Randwick Health & Innovation Precinct (RHIP).

At the inaugural RHIP **Big Ideas Forum** held in May, Precinct foundation partners exchanged ideas and discussed bold initiatives like how to strengthen and facilitate 'bench to bedside' research.

The group discussed how they could partner and transform health systems, industry partnerships and sustainability initiatives amongst other big ideas. About 30 key leaders explored the unique opportunity that comes from linking clinicians and health care professionals from partner organisations with expertise across UNSW academic disciplines.

The forum focused specifically on education, research and knowledge exchange opportunities. UNSW leaders identified major areas of academic and health activity that promise to unlock new value, deliver impact and benefit the wider community.

Faculty leads explored a number of different topics impacting on the health system, including molecular science, artificial intelligence, programming and engineering.

"The Precinct is a centre point for collaboration. We want to generate immense value for generations, by tackling the major health challenges that face us today," said Mr Michael Still, RHIP Chair, as he reflected on the potential of the Precinct.

"We have a unique opportunity to build an environment of collective leadership that will guide us for the thousands of people contributing to health, education, science and research."

#### Also in this edition:

- ✓ Acute Services Building Commissioning Update
- ✓ Royal Hospital for Women Refurbishments
- ✓ Donation announced for new Children's Comprehensive Cancer Centre
- ✓ News from the Randwick Health & Innovation Precinct

Leaders discussed how to maximise the benefits that come from physically positioning a globally recognised Go8 University with a leading hospital complex. They agreed that through collaboration, RHIP can address and solve current and future health challenges across the lifespan.

Randwick Campus Redevelopment's infrastructure projects gave leaders a more concrete reminder of the Precinct's scale and potential.



*Pictured: Chief Executive for South Eastern Sydney Local Health District, Tobi Wilson*

For more information:

 [randwickcampusredevelopment.health.nsw.gov.au](https://randwickcampusredevelopment.health.nsw.gov.au)

 [randwickcampusredevelopment@health.nsw.gov.au](mailto:randwickcampusredevelopment@health.nsw.gov.au)

 1800 571 866



## THE COUNTDOWN IS ON

### PRINCE OF WALES HOSPITAL ACUTE SERVICES BUILDING

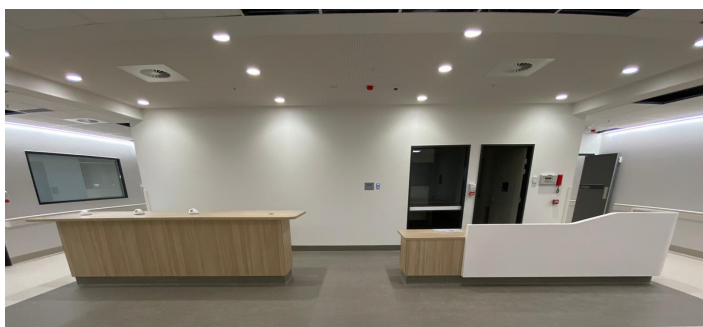
#### A sneak peek at the new Orthopaedics inpatient unit in the ASB

With internal fitouts nearing completion across each level of the Acute Services Building (ASB), the Randwick Campus Redevelopment team are excited to continue to showcase what the new hospital is looking like on the inside.

This month, we take a sneak peek at the new Orthopaedics inpatient unit, which will be located on level 5 of the ASB.

Key features of the new Orthopaedics inpatient unit include:

- ✓ Additional space at the bedside for patient comfort and ease of care
- ✓ A greater number of single rooms
- ✓ Ensuites in every room
- ✓ Proximity to Aged Care for orthogeriatric support
- ✓ High visibility area, close to the staff station
- ✓ A large, dedicated equipment storeroom
- ✓ Two staff stations, one with an adjoining staff workroom
- ✓ Integrated education, teaching and research spaces (a combination of quiet and active workstations and breakout rooms)



Staff station



Staff workroom



Patient room



Patient lounge

For more information:

 [randwickcampusredevelopment.health.nsw.gov.au](http://randwickcampusredevelopment.health.nsw.gov.au)

 [randwickcampusredevelopment@health.nsw.gov.au](mailto:randwickcampusredevelopment@health.nsw.gov.au)

 1800 571 866



## THE COUNTDOWN **IS ON**

### PRINCE OF WALES HOSPITAL ACUTE SERVICES BUILDING

#### 130 clinicians visit the ASB in the last 30 days

Each week, groups of clinical and non-clinical staff don a pair of boots and hard hats and take part in tours of the new building. It's an exciting opportunity for staff to get a feel for the spaces that they'll soon be working in. If you haven't yet been on a tour and are interested, please contact your Manager.

Pictured below are the Allied Health Department Heads standing at the main public entrance on Botany Street, and members of the Information Services team standing on the very top level, checking out the city skyscraper views.



#### ASB Fun Facts

##### Building a hospital is no easy feat!

The project's construction partner, Lendlease have clocked over  **2 million** working hours on the ASB, with more than **1,700** construction workers inducted onto the building since early works commenced in **mid-2018**.



There have been **zero** critical incidents to date; a reflection of the high level of due diligence shown from Lendlease in terms of safety and quality.

For more information:



[randwickcampusredevelopment.health.nsw.gov.au](https://randwickcampusredevelopment.health.nsw.gov.au)



[randwickcampusredevelopment@health.nsw.gov.au](mailto:randwickcampusredevelopment@health.nsw.gov.au)



1800 571 866





## THE COUNTDOWN IS ON

### PRINCE OF WALES HOSPITAL ACUTE SERVICES BUILDING

#### Building handover confirmed for later this year. What does this mean?

'Building handover' is when responsibility for the building is transferred from the builders to South Eastern Sydney Local Health District (SESLHD). At that time the ASB will no longer be a building site. No hard hats or boots required!

Following building handover, all staff will have an opportunity to attend familiarisation tours, which will be managed by SESLHD and the project team.

Controlled access to the new hospital provides the opportunity for workflows, patient and staff journeys and other simulation activities to be rigorously tested prior to opening in early 2023.

Building handover will occur in late 2022.



#### Coming Up!

##### Catch the redevelopment team at the Barker Street entrance

The ASB Change & Commissioning team will be available to answer all redevelopment-related questions over two consecutive days:

- ✓ **Tuesday 31<sup>st</sup> May, 10am – 2:30pm**
- ✓ **Wednesday 1<sup>st</sup> June, 10am – 2:30pm**

This is your chance to drop by, meet the team, and ask questions about the ASB and the broader Randwick Campus Redevelopment.

Keep an eye out for the Randwick Campus Redevelopment tablecloth and our friendly Change & Commissioning Leads.



For more information:

 [randwickcampusredevelopment.health.nsw.gov.au](https://randwickcampusredevelopment.health.nsw.gov.au)

 [randwickcampusredevelopment@health.nsw.gov.au](mailto:randwickcampusredevelopment@health.nsw.gov.au)

 1800 571 866



## THE COUNTDOWN IS ON

### PRINCE OF WALES HOSPITAL ACUTE SERVICES BUILDING

#### You asked! We've listened...

Each month, the Change & Commissioning team aim to provide answers to questions raised by Prince of Wales Hospital staff including in the recent Pulse Check Survey.

The frequently asked questions and answers will also be published on the [redemption Intranet](#). The team are keen to increase staff understanding of the ASB and what it means to them.

#### Q: How will I work between multiple buildings?

**A:** Planning is underway to ensure key relationships between critical areas will be maintained to facilitate the movement of staff around wards and provide the best possible care for patients.

Scenario testing and training will be undertaken so staff can test navigating between the new and old buildings via the new link bridges.

The team are currently developing resources, including supporting diagrams that map out the best pathways to move between the buildings and the estimated travel times.

The majority of paths between the ASB and the existing buildings will take no longer than the travel routes that staff and patients currently undertake.

As a reminder, the ASB will be connected to the current hospital campus via two link bridges, which will simplify the journey for staff, visitors and patients. The first is for public access and will be on level 0, connecting the existing Barker Street entrance to the Botany Street entrance of the new building.

With clear and intuitive wayfinding, (signage and electronic kiosks and real-time location maps) visitors will easily be able to move around and navigate the hospitals campus.

The second link bridge is a three-level clinical bridge connecting levels 1, 2 and 3 with the Campus Centre, over Delivery Drive. The primary function of this link bridge is to maintain fast links to clinical areas.

#### Q: I can't see my service in the list of new facilities in the ASB. What does this mean for me?

**A:** Departments not listed as moving to the ASB will remain on the existing campus. Plans for the existing campus are ongoing, with some areas to be decommissioned and others relocated into refurbished areas.

Planning is occurring on an ongoing basis as to the best way to improve the facilities for all clinical services, to ensure contemporary models of care are able to be delivered across all services.

The following plans have been confirmed:

- The Parkes building will be decommissioned from level 4 above.
- Haemodialysis will be moving into the old Emergency Department, once the area has been fully refurbished.
- The Ear, Nose & Throat Surgical ward and Renal Ward will both be moving into the Dickinson Building once the area has undergone a minor refurbishment.

All staff (clinical and support staff) will be able to access staff support spaces on each floor of the ASB. These spaces include meeting and staff rooms as well as a staff terrace on level 4.

All affected staff will be kept informed as future plans for the Randwick Campus Redevelopment progress. Visit the Intranet to see the [full list of services](#) moving into the ASB.

For more information:

 [randwickcampusredemption.health.nsw.gov.au](https://randwickcampusredemption.health.nsw.gov.au)

 [randwickcampusredemption@health.nsw.gov.au](mailto:randwickcampusredemption@health.nsw.gov.au)

 1800 571 866

## New roster office complete while refurbishments continue at the Royal Hospital for Women

Stage 2 of refurbishment works at the Royal Hospital for Women have now commenced, starting with the demolition of the old Admissions area on level 0.

The Admissions reception desk has moved, and the Admissions team will be temporarily located in the new roster office while further refurbishments take place.

The new roster office is located adjacent to the Admissions reception desk and the Royal Hospital for Women lobby lifts.

Coming up:

- ✓ Construction of a new entry portal in the lobby
- ✓ Refurbishment of the Executive Unit reception and outpatient area

Thank you to all Royal Hospital for Women staff for their understanding and patience while these works progress.

*Pictured: The new roster office*



## Find out about the construction activity on the Randwick Campus Redevelopment in the monthly construction notice



The Randwick Campus Redevelopment team publishes a monthly construction notice summarising activities underway across the broader redevelopment.

**Scan the QR code**

**or access the notices from the project website at**  
[www.randwickcampusredevelopment.health.nsw.gov.au/news-and-publications/construction-notices-\(1\)](http://www.randwickcampusredevelopment.health.nsw.gov.au/news-and-publications/construction-notices-(1))



For more information:

 [randwickcampusredevelopment.health.nsw.gov.au](http://randwickcampusredevelopment.health.nsw.gov.au)

 [randwickcampusredevelopment@health.nsw.gov.au](mailto:randwickcampusredevelopment@health.nsw.gov.au)

 1800 571 866



## A fond farewell as Chair of the ASB consumer committee steps down

Back in 2017, an advertisement inviting interested members of the public to join the first stage of the Randwick Campus Redevelopment caught former healthcare worker and Eastern Suburbs local, Deb Verran's eye.

Deb put her hand up along with 11 other volunteers, and together they formed a committee, developed their own strategic plan and became the official consumer voices for the design of the new ASB.

More than four years later, Deb has made the decision to step down from her role and reflects on her journey as Chair of the Consumer & Community Advisory Committee. While it has been a steep learning curve, Deb is proud to have worked alongside other consumers and hospital staff on such a major health infrastructure project.

**“Being a consumer is not for the fainthearted!**

**It takes someone with a real interest in health and the future of healthcare – you need to listen, speak up and be engaged. There is a lot more to it than just sitting in a meeting.”**

“The most interesting aspect has been sitting on Project User Groups and soon realising that clinicians and consumers are actually very much aligned and have the same goals – and that is to put the patient first,” said Deb.

With a background in health and a passion for patient centred care, Deb has been an invaluable contribution to the committee.

“Consumer engagement helps us improve our delivery of care and overall patient experience. Deb and the other consumers have played a crucial role in the design and development of the ASB, ensuring that a diverse community voice and perspective is always heard,” said Jennie Barry, General Manager for Prince of Wales Hospital.

With the project now entering the Operational Commissioning phase, the committee is in good hands with fellow consumer, John Patterson taking over as Chair. Together with Co-Chair, Bob Wilson (who initially Chaired the committee before Deb), they will lead the group through the final phase of the project and into the opening of the new hospital.

Jennie said: “On behalf of everyone involved in the project, I’d like to thank Deb for her commitment and leadership in bringing the consumer voice to the table. I’d also like to extend a warm welcome to John into the role.”

*Pictured: Deb Verran, former CCAC Chair*



## New cancer centre for children to provide world's best care at Randwick

Rory was just two and half years old when his parents were told the unthinkable - he had a very rare aggressive thyroid cancer that had already metastasised to his neck and chest.

Every week in Australia, 20 children like Rory are diagnosed with cancer and too often, they are told there is no further treatment. This is something soon hoped to change.

In a major announcement at Randwick, the Hon. Greg Hunt MP confirmed a \$15 million philanthropic donation from the Minderoo Foundation for Australia's first Children's Comprehensive Care Centre.

The Centre will be a fully integrated cancer centre, combining world-leading clinical care, with ground-breaking research and education, to change the face of paediatric cancer.

In Rory's case, identifying a targeted therapy for his specific cancer was only possible thanks to an analysis of his cancer and blood. Performed through the Zero Childhood Cancer program (ZERO), a collaboration between Kids Cancer Centre (KCC) and Children's Cancer Institute (CCI), this analysis confirmed Rory had a RET mutation and a rare inherited cancer predisposition syndrome and helped guide his treatment.

Fast forward to today, Rory is responding well to treatment and has been able to continue his oral therapy closer to home in Port Macquarie.

Professor Tracey O'Brien, Director of KCC said this was the goal for all children. "Care for kids like Rory with rare cancers requires pushing the boundaries of science, safe use of cutting-edge therapies in hospital and strong collaboration across differing specialities with hospitals and local communities."

Professor Michelle Haber AM, Executive Director, CCI added she is excited about what the Centre will be able to achieve in the future.

"Building on decades of success between Children's Cancer Institute and Kid's Cancer Centre, this Centre will be globally leading with positive impact for children with cancer in Australia and internationally," she said.

In recognition of this philanthropic leadership, the Centre will be known as the Minderoo Children's Comprehensive Cancer Centre.

Expected to open in 2025, the Centre will be a partnership between the KCC at Sydney Children's Hospital Randwick, CCI and University of New South Wales.

[Read the full media release here.](#)



*Pictured: Rory with his family*

For more information:

 [randwickcampusredevelopment.health.nsw.gov.au](https://randwickcampusredevelopment.health.nsw.gov.au)

 [randwickcampusredevelopment@health.nsw.gov.au](mailto:randwickcampusredevelopment@health.nsw.gov.au)

 1800 571 866



### Faces of the Precinct

Get to know more about the people working behind the scenes to advance the Randwick Health & Innovation Precinct.

**Thoughts on the Precinct with Sam McFedries, Translational Research Lead for the Randwick Health & Innovation Precinct**

#### Q1. How would you describe the Precinct in four words?

Futuristic, inclusive, person-centred, outcome-driven.

#### Q2. What excites you most about the Translational Research opportunities across the Precinct?

It provides a framework for researchers of varying career stages, disciplines and affiliations to come together and share not only state-of-the-art infrastructure and equipment, but our enormous expertise to produce evidence-based research that ultimately changes health outcomes for patients.

It is also breaking barriers by taking a disease agnostic approach, allowing for experts to cross their discipline and affiliate divides to build robust teams to tackle the hardest problems faced in health.

It also leads to better value for health, by really leveraging our strengths and differences of our partnerships and I really look forward to seeing the results of collaborations with clinicians, allied health and nursing professionals, engineers, economists, data scientists, social scientists and beyond.

*Pictured: Christina Kingen, Darka de Vries & Brittney Millbank from UNSW*



### UNSW donates Easter eggs to Sydney Children's Hospital

In a warm and fuzzy example of the benefits of the Precinct partnerships coming to life, UNSW Sydney donated 500 bags of easter eggs, fairy floss and popcorn to the Sydney Children's Hospital, Randwick and The Children's Hospital at Westmead.

As a result of UNSW's community day getting cancelled at short notice, the university had a huge surplus of goodies ordered for the event.

UNSW's Hospitality team coordinated the donation to the hospital, which were then shared with patients, their families and staff over the Easter long weekend.



For more information:

 [randwickcampusredevelopment.health.nsw.gov.au](http://randwickcampusredevelopment.health.nsw.gov.au)

 [randwickcampusredevelopment@health.nsw.gov.au](mailto:randwickcampusredevelopment@health.nsw.gov.au)

 1800 571 866