

## Newsfeed No. 27

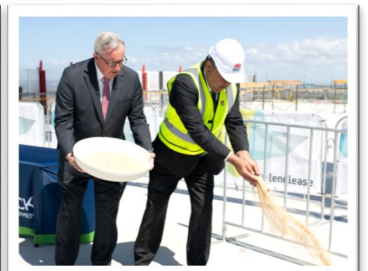
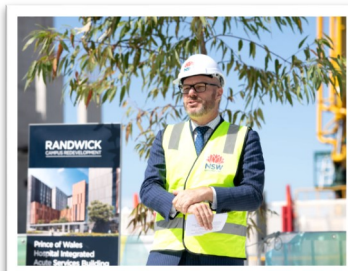
March 2021



### Prince of Wales celebrates the Integrated Acute Services reaching its full height

This month we celebrated an exciting milestone for the Integrated Acute Services Building and for Prince of Wales Hospital as a whole. On Monday 25 March, NSW Premier Gladys Berejiklian and Health Minister Brad Hazzard visited the construction site for a topping out ceremony to mark the Prince of Wales Hospital Integrated Acute Services Building reaching its full height. They both recognised and congratulated staff and community members who have played a key part in the design, planning and delivery of this world-class facility.

At the ceremony, we welcomed Uncle Llyod Walker, Board Member of the La Perouse Local Aboriginal Land Council, to celebrate the La Perouse Aboriginal community's continued connection to Country at the site. The Bijigal and Gadigal peoples have traditionally occupied this area for thousands of years before us and we have evidence of their presence on site dating back over 8,000 years. By placing sand from the ancient sand dunes on which this hospital stands, into the final concrete pour, we anchor the incredible history of the site to the new hospital. This history will be celebrated in an Aboriginal Garden at the main entry to the new hospital.



Prince of Wales Hospital Staff across all specialities and departments, including non-clinical staff, joined in on the celebration with a celebratory morning tea. This milestone is a great opportunity to celebrate the forward progress we are making as a hospital to deliver new and innovative models of care and establish ground-breaking health and education partnerships.

[Click here](#) to see a highlights video from the event.

[https://www.youtube.com/watch?v=hIBO\\_2hIA8E](https://www.youtube.com/watch?v=hIBO_2hIA8E)

For more information:

 [randwickcampusredevelopment.health.nsw.gov.au](http://randwickcampusredevelopment.health.nsw.gov.au)

 [randwickcampusredevelopment@health.nsw.gov.au](mailto:randwickcampusredevelopment@health.nsw.gov.au)

 1800 571 866

## What's ahead for Sydney Children's Hospital Stage 1 and Children's Comprehensive Cancer Centre in 2021?

Planning, design and engagement with staff and the community continues to be a main priority for SCH Stage 1 and CCCC project. While many milestones have been achieved, it's exciting to consider what lays ahead. Here we go through some of what we can expect for the first half of the year:

**Detailed Design** - this stage of the process adds another layer of detail to the outcomes of Schematic Design and looks at specific room and ward layouts, as well as developing a list of technology, furniture, fixtures and equipment for different areas of the new hospital. Kicking-off in March, the purpose of Detailed Design is to ensure we reach a finalised design of each room. This intensive process is driven by input from our Project User Groups, made up of clinicians and operational staff, patients, carers, as well as members of the community, to ensure the best clinical and patient outcomes for your new hospital.



**Consumer Engagement** – monthly consumer committee meetings will continue to engage our community on critical design opportunities for the redevelopment. There will also be other engagement opportunities with the Youth and Diversity team, Hospital School and local schools to ensure we are collaborating with a diverse group.

**Change Management** – Detailed change management planning has commenced and the team are in the process of developing the governance framework and detailed plans for ensuring a smooth transition through the significant change each unit/department will experience.

A key principle will be to ensure a holistic approach to change for each unit/department ensuring a seamless experience for staff.

If you are interested in getting involved in the project this year, please email for more information: [randwickcampusredevelopment@health.nsw.gov.au](mailto:randwickcampusredevelopment@health.nsw.gov.au)



For more information:

 [randwickcampusredevelopment.health.nsw.gov.au](http://randwickcampusredevelopment.health.nsw.gov.au)

 [randwickcampusredevelopment@health.nsw.gov.au](mailto:randwickcampusredevelopment@health.nsw.gov.au)

 1800 571 866

## Construction update

As construction progresses in 2021 a number of exciting project milestones will be reached. This month the Prince of Wales Hospital Integrated Acute Services Building has reached its highest point of 64m above ground from Botany Street. The main core of the building currently is at Level 10 providing you with an indication of the full height of the building. Main structure works and installation of the building's exterior panelling and glass are continuing with the building to be fully enclosed by mid-2021.

Construction workforce peak will be reached in mid-2021 with approximately 600 jobs being filled on site. Our construction team are visitors in both a hospital and residential community setting and therefore will continue to make every effort to minimise any impacts, including on local parking and amenities. All site workers are inducted to understand their obligations when working on the Randwick Campus Redevelopment site, including, being highly aware of their presence within the Randwick community and hospitals campus.



## Green Travel Profiles: David Signorio, ICT Lead for the Randwick Campus Redevelopment

David lives in Gosford and commutes to work each day by train and light rail. His daily trip take two hours each day but is well worth it to live in such a beautiful part of the country. He has made the trip part of his daily routine, being able to maximise his time on public transport.

“I moved to the central coast over 10 years ago and have commuted to Sydney for work since. I use the travel time as my time. My life is quite busy balancing all the activities high school aged kids and my work in preparing the ICT in the new Integrated Acute Services Building. This time is a chance for me to read, listen to podcast or catch up on my latest TV series. “

**To plan you Public Transport trip visit:**

<https://transportnsw.info/trip#/trip>



For more information:

 [randwickcampusredevelopment.health.nsw.gov.au](https://randwickcampusredevelopment.health.nsw.gov.au)

 1800 571 866

 [randwickcampusredevelopment@health.nsw.gov.au](mailto:randwickcampusredevelopment@health.nsw.gov.au)

## Randwick Campus Redevelopment Questions and Answers

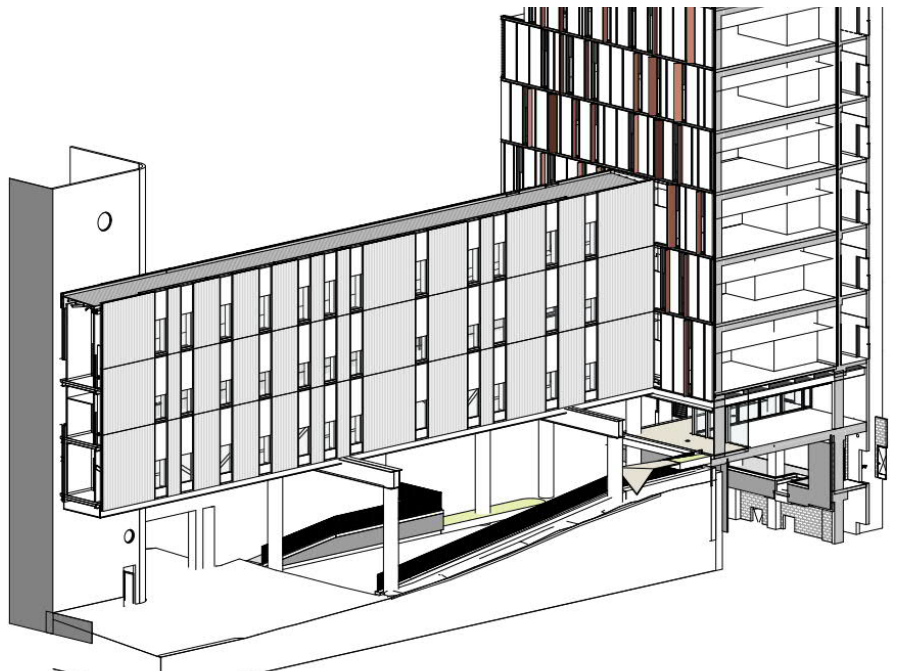
### How will I get from the current campus to the Prince of Wales Hospital Integrated Acute Services Building?

The new adults hospital will be connected to the current campus via two link bridges.

The first link bridge is a public link bridge on Level 0. This link bridge will connect the Barker Street Entrance to the Botany Street Entrance of the new building.

The other link bridge is a three level patient bridge connecting via levels 1, 2 and 3. This bridge will be located over Delivery Drive and will connect directly into the Campus Centre. The primary function of this link bridge is to seamlessly connect the new hospital to existing services via the Campus Centre and maintain fast links to clinical areas such as the existing operating theatres.

Throughout the commissioning phase there will be extensive scenario testing to test work flows and provide training for teams working over the two buildings. There will also be wayfinding testing with consumers to test signage and visitor information.



### Will there be staff facilities like showers, change rooms, etc.?

Yes, the Integrated Acute Services Building has staff showers and change rooms on every inpatient unit floor with appropriate supporting facilities for the Emergency Department, ICU and Operating Theatres.

For the extended Randwick's Hospitals Campus there will be End of Trip Facilities for staff who cycle or walk to work, that will be completed prior to the opening of the new Prince of Wales Hospital Integrated Acute Services Building opening. These facility's will provide showers, change rooms, lockers, and secure bike parking and will be located in the campus carpark. Designs are currently being finalised with construction due to commence in 2021.

## Have a question?

Please send any questions you have to [randwickcampusredevelopment@health.nsw.gov.au](mailto:randwickcampusredevelopment@health.nsw.gov.au)

For more information:

 [randwickcampusredevelopment.health.nsw.gov.au](http://randwickcampusredevelopment.health.nsw.gov.au)

 1800 571 866

 [randwickcampusredevelopment@health.nsw.gov.au](mailto:randwickcampusredevelopment@health.nsw.gov.au)

T21/19015