

Construction activity continues for the Prince of Wales Hospital Integrated Acute Services Building (IASB); the first stage of the Randwick Campus Redevelopment and the catalyst project for expanding the world-class health, research and education facilities at the Randwick Health & Innovation Precinct.

We thank you for your patience while we expand our world-class health, research and education facilities.

Construction work has resumed with the workforce operating under strict Covid-19 management plans.

Key activities continuing throughout August include:

Integrated Acute Services Building construction;

Façade installation, external painting and internal fit-out including walls, floor finishes and services.

Hospital Road construction;

Demolition of temporary structures, bulk excavation and service upgrades. Temporary road closures to enable construction of link bridge foundations.

Hospital campus car park activities;

Connection of the recently installed bulk oxygen storage tank to existing infrastructure and site wide communications installation work.

Upcoming activities

Please note: Dates below may change due to current Covid-19 impacts on the construction workforce

Temporary weekend closures of Delivery Drive and Hospital campus loading docks

Out of hours construction activity will commence shortly and will include column construction in the loading dock and along Hospital Road. To facilitate these works, there will be an upcoming loading dock closure from **5:00pm Friday, 6 August to 10:00pm Sunday 8, August 2021**. During this closure, access to the B2 carpark will be restricted to allow for safe exclusion zones for the work.

Weekend works in the loading dock and along Hospital Road, are expected to continue over a number of months to facilitate the installation of support structures for the clinical and public link bridges connecting the IASB with the existing hospital campus.

Weekend work for Campus Centre façade removal

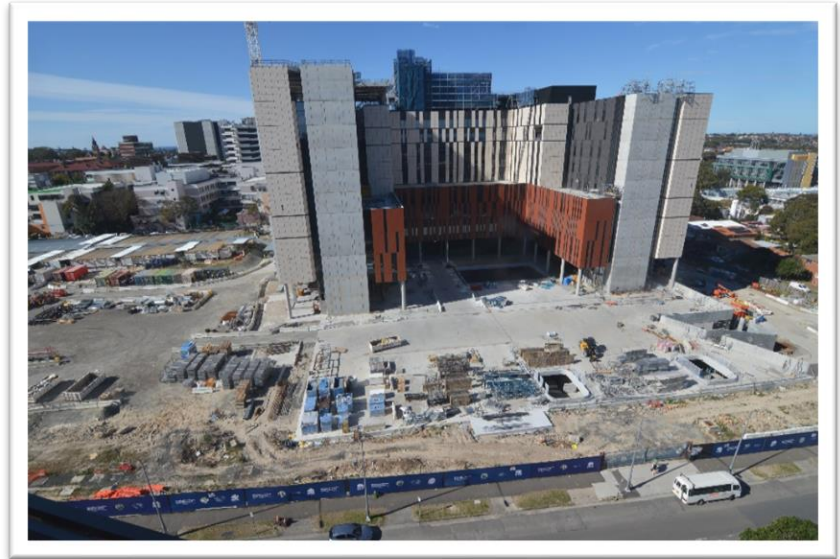
Façade removal work will commence in the loading dock to prepare for the future clinical link bridge installation. The dates for this work are to be confirmed however are expected to occur on a Saturday, Sunday and Monday in August or September. A notification will be issued once the works programme is confirmed.

Stormwater work on Hospital Road

Planning is underway to upgrade the stormwater system on the southern section of Hospital Road. Early services investigation works will take place from mid-August. The stormwater works are expected to commence from early September. A notification will be issued once the works programme is confirmed.

Cable pulling for the underground High Voltage Network, Hospital Road

One final night of Ausgrid works is required on Hospital Road to upgrade the underground network supply. The date for this activity is scheduled for **Sunday 29 August, between 6:00pm and 5:00am** and will be carried out under an Ausgrid approval. Lighting towers will be used to ensure worker safety, and they will be positioned to minimise impact on surrounding buildings. Power supply to private properties will be maintained during this work.



The IASB construction site, looking towards the east

We encourage you to get in touch if you have any questions or feedback, or would like to receive email updates:

Community Contact 1800 571 866 (24hrs)

randwickcampusredevelopment@health.nsw.gov.au

www.randwickcampusredevelopment.health.nsw.gov.au

Minimising construction impacts

We are committed to minimising the impact of our works where we can. All construction activities are carried out with the health and safety of the local community as our top priority. We endeavour to keep noise, dust and vibration to a minimum.

Current construction hours

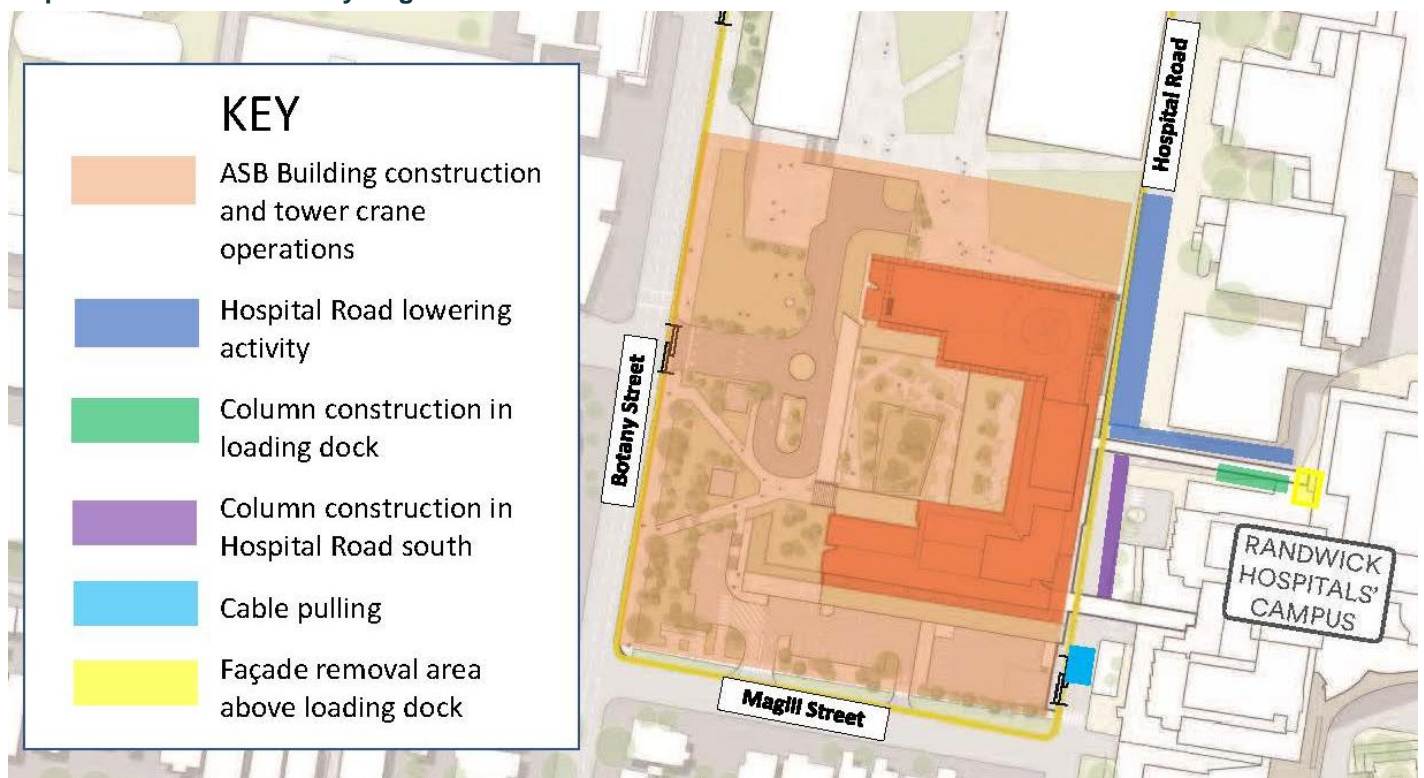
The NSW Government's current Health Services Facilities Order provides approval for the extended construction hours of **Monday to Friday 6:00am – 10:00pm and Saturday 7:00am – 5:00pm.**

The extended hours are a temporary measure to ensure worker safety and progress is maintained for the construction of essential health facilities during the COVID-19 pandemic.

In addition, approval has been granted for works to occur between **8:00am and 10:00pm, Sunday 8 August**, during the upcoming loading dock closure.

Other work may be planned outside of the approved construction hours to ensure the safety of workers, pedestrians and motorists, and to minimise impacts to local traffic and hospital access. Any out of hours work will continue to be communicated in advance.

Map of Construction Activity August 2021



						
Construction worker and community safety No.1 priority	Monitoring health and COVID-19 symptoms	Good personal hygiene practice and requirements	Maintaining social distancing in and around site	Worker segregation and contact record keeping	Extended site work hours and altered work schedules	Increased cleaning and sanitation regimes

The health and safety of Hospital staff, families, visitors, construction workers and the local community remains our top priority.

We encourage you to get in touch if you have any questions or feedback, or would like to receive email updates:

Community Contact 1800 571 866 (24hrs)

randwickcampusredevelopment@health.nsw.gov.au

www.randwickcampusredevelopment.health.nsw.gov.au