

Shaping the future of healthcare

NSW Government is partnering with UNSW Sydney to strengthen the Randwick Health & Innovation Precinct.

This involves integrating new health, education, training and research facilities with acute healthcare services to benefit patients, carers, staff and the broader NSW community.

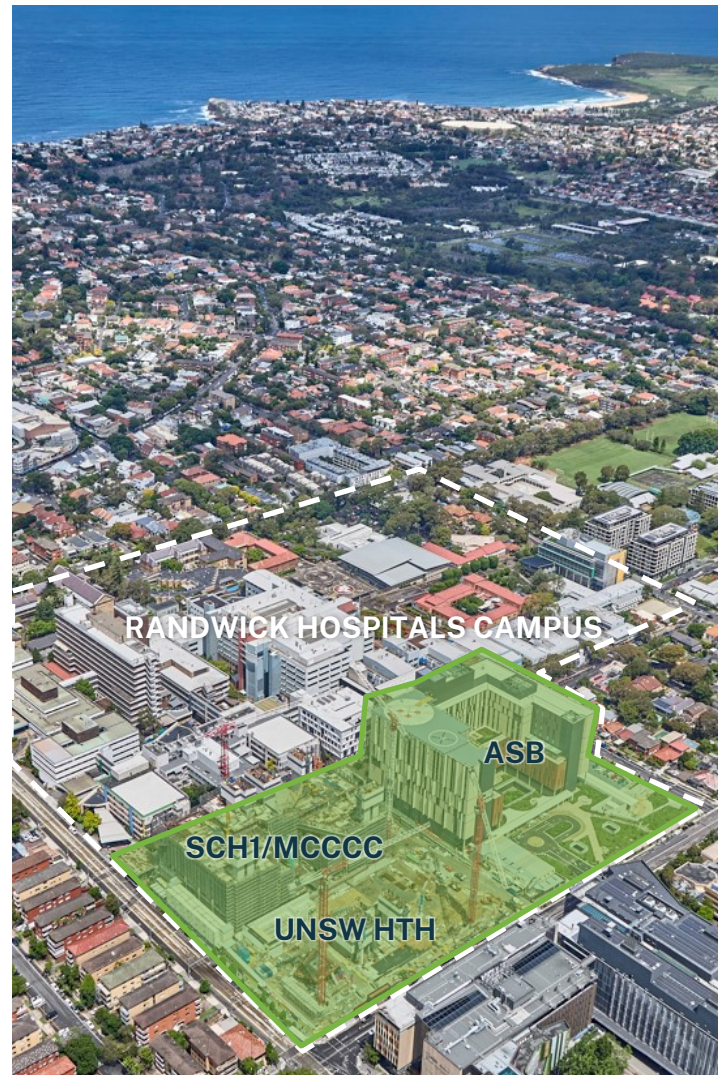
More than \$1.5 billion is being invested in the Randwick Campus Redevelopment projects to bring this vision to life.

There was significant progress on site during 2023, with the Prince of Wales Hospital Acute Services Building (ASB) officially opened to patients following more than four years of construction.

Construction also began on UNSW's Health Translation Hub (HTH) and continued on the Sydney Children's Hospital Stage 1 and Minderoo Children's Comprehensive Cancer Centre (SCH1/MCCCC).

This year will see the celebration of a number of key project milestones as the redevelopment project continues.

Read on to learn more about these transformative projects that are shaping the future of healthcare in our community and beyond.



Randwick Campus Redevelopment project milestones in 2023



Apr/May 2023
SCH1/MCCCC
tower cranes
arrive on site



Jun 2023
HTH
construction
commences



Aug/Sep 2023
HTH tower
cranes arrive
on site

Mar 2023
ASB
welcomes
first patients



May 2023
Adult
Emergency
Department
opens in ASB



Jun 2023
Historic
Aboriginal
hearth stones
return to site



For more information:

 randwickcampusredevelopment.health.nsw.gov.au

 randwickcampusredevelopment@health.nsw.gov.au

 1800 571 866



View our interactive map to learn more about the site and its projects

RANDWICK

CAMPUS REDEVELOPMENT

Catalyst project continues to evolve

After more than seven years of planning and construction, the Prince of Wales Hospital Acute Services Building (ASB) opened in early 2023.

This marked the first major upgrade to the hospital in 25 years, providing modern facilities for various services and inpatient units.

The ASB boasts state-of-the-art infrastructure, supporting innovative approaches to acute healthcare and offering purpose-designed facilities for staff.

Complementing the enhanced clinical and public spaces within the ASB, a series of curated arts and cultural elements feature both within and around the building, helping to create a welcoming environment, foster calm and support wayfinding.

Notable access changes include a new hospital entrance and drop-off on Botany Street, supported by a traffic signal intersection, and the relocation of the adult Emergency Department and drop-off, now accessed via Magill Street. An internal pedestrian bridge connects the new building to existing campus buildings and the campus car park.

Constructed to enable future expansion, the 2022-2023 NSW State Budget allocated further funding for outfitting additional operating theatres, recovery spaces, an ICU pod, and two inpatient units within the building.

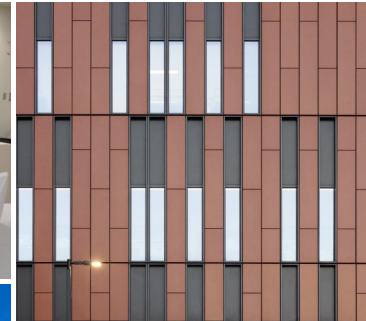
Following the recent completion of some of these works, the hospital team is busily preparing to move the General and Specialist Surgery inpatient units into the building in the coming months.

Ongoing works within the new building will be accompanied by refurbishment of vacated spaces in the Dickinson and Campus Centre buildings, creating new spaces for various hospital and patient services.

Planning and staged delivery of these additional works are in progress, with construction continuing throughout 2024.



SCAN HERE to check out the RCR playlist on YouTube, featuring videos highlighting the ASB arts projects and much more!



1. First ASB patient arrives in new Acute Aged Care ward.
2. Emergency Department drop-off, accessed via Magill Street.
3. Emergency Department reception.
4. A collection of 8,000 year old Aboriginal hearth stones found during excavation have been returned to site as part of a curated display.
5. Vivid artwork and wall murals feature in public spaces throughout the building.
6. New ASB front entrance off Botany Street.



For more information:

 randwickcampusredevelopment.health.nsw.gov.au

 1800 571 866

 randwickcampusredevelopment@health.nsw.gov.au

RANDWICK

CAMPUS REDEVELOPMENT

Transforming children's health

During 2023, construction progressed on the Sydney Children's Hospital Stage 1 and Minderoo Children's Comprehensive Cancer Centre, with the vision of creating a contemporary and welcoming children's hospital and research facility that meets the future needs of patients, families and the community.

More than 2,000 children, patients, families, carers, Aboriginal Elders, community members and staff provided input into the project. Their feedback contributed to designing spaces that feel like home, ensuring the development of patient-centric paediatric healthcare.

The new building will include an expanded emergency department, children's intensive care unit, a neurosciences centre and majority single-patient rooms, along with family rooms, green outdoor areas, play spaces and an Aboriginal gathering space.

The new building will connect with the adjacent UNSW Health Translation Hub, forming a comprehensive health, education and research complex. These facilities will also link with the Acute Services Building, promoting collaboration and fostering innovation between health services, education and research for fast translation of research outcomes to patient care.

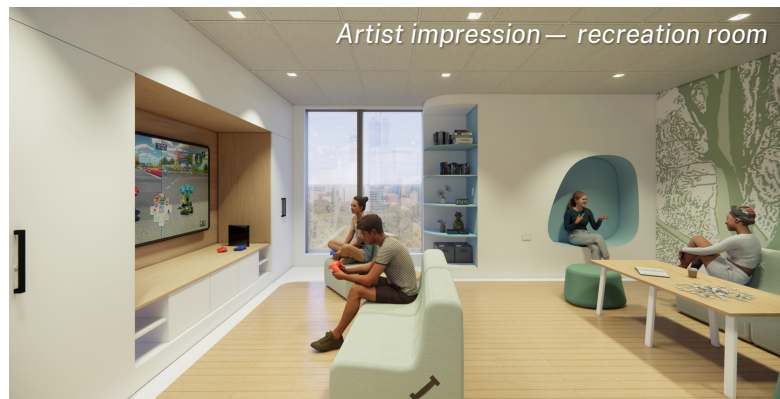
Construction of the children's hospital and research centre will continue throughout 2024,



Artist impression — western facade

with the structure soon to reach its full height. Activities will then shift from concrete pours to installation of the building's colourful glass exterior and installation of services.

Alongside the continued construction, artists and creatives will engage with young people to develop a series of arts installations, ensuring the new children's hospital offers unique and inspiring experiences for both patients and visitors.



Artist impression — recreation room

The NSW and Federal Governments have partnered with Children's Cancer Institute, Sydney Children's Hospitals Network including the Kids Cancer Centre, and UNSW Sydney to plan and deliver Australia's first Children's Comprehensive Cancer Centre within the new children's hospital and university buildings on site.

Philanthropic contributions from Sydney Children's Hospitals Foundation and Minderoo Foundation also support this initiative.

The Minderoo Children's Comprehensive Cancer Centre will include advanced laboratory spaces

and deliver integrated, specialist cancer treatment, education and research, aiming to transform childhood cancer treatment and become one of the world's leading paediatric cancer centres.



Artist impression — laboratory space

For more information:

 randwickcampusredevelopment.health.nsw.gov.au

 1800 571 866

 randwickcampusredevelopment@health.nsw.gov.au

Publication date: February 2024

Artist impression — education space



UNSW extension to focus on education and research

The Randwick Hospitals Campus has partnered with UNSW Sydney for almost 60 years. The new Acute Services Building strengthens this collaboration by physically integrating the Prince of Wales Hospital and UNSW.

The soon-to-open UNSW extension of the Acute Services Building aims to advance patient care through 10 storeys of dedicated education and research spaces. These spaces will bring together researchers, clinicians and health experts and include four floors for clinical education, three laboratories, room for biomedical engineering and a Dementia Care pilot facility.

Within the extension, healthcare students will learn with each other and from clinicians in flexible spaces directly connected to clinical care areas. Together with their healthcare teams, students will gain an appreciation of patient experiences and the challenges of delivering healthcare, before moving to dedicated learning spaces to reflect, reinforce and study.

Reimagining health and innovation

Construction of the \$600 million UNSW Health Translation Hub began in mid-2023, with the project set to bring researchers, clinicians, educators, students and industry partners together under one roof to drive excellence in innovation.

The 15-storey building will directly connect to the university campus and the new children's hospital building that is currently under construction. Its proximity to the new Prince of Wales Hospital building will facilitate seamless integration between UNSW and all four hospitals on the Randwick campus.

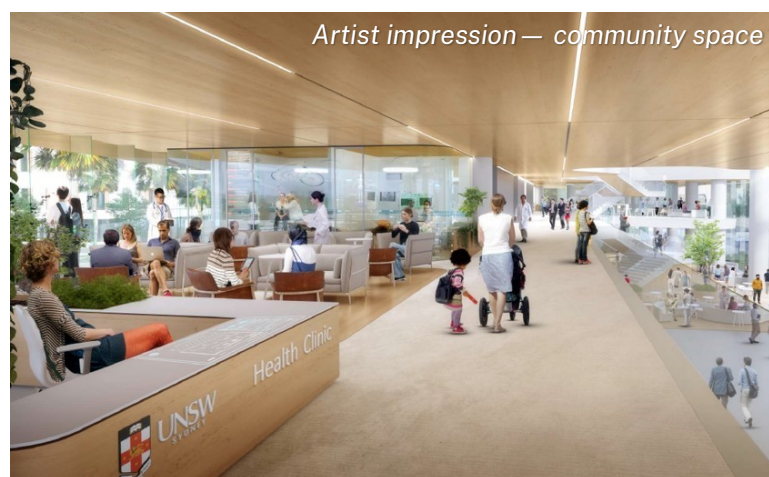
The UNSW spaces in the building will include research rooms, laboratories, clinical schools and medical clinics. The additional space will be available to industry partners, providing a unique opportunity for collaboration and positioning the Randwick Health & Innovation Precinct as a leader in global health research, education and innovation.

Artist impression — western facade



The building is set to reach its full height later this year, with completion on track for late 2025.

Artist impression — community space



Internal fit-out works have been underway since the main structure was completed in 2023 and are due for completion in the coming months. UNSW will then commission the spaces, and the facility is set to open from mid-2024.



We thank you for your ongoing patience as we deliver these exciting projects, and look forward to sharing significant milestones with you into the future.

For the latest news, visit www.randwickcampusredevelopment.health.nsw.gov.au



View our interactive map to learn more about the site and its projects