



*Aerial view of the Randwick Campus Redevelopment and Hospital Road north*

## Hospital Road north works and upcoming changes to traffic and pedestrian access

Construction activity is underway on the northern section of Hospital Road outside the Sydney Children's Hospital, Randwick as part of the Sydney Children's Hospital Stage 1 and Children's Comprehensive Cancer Centre enabling works.

Construction of the new children's hospital will involve several phases of construction. The first phase of enabling works will upgrade stormwater, power and utility networks to support the increased scale of the new health care infrastructure.

The works are part of the Randwick Campus Redevelopment, which includes more than \$1.5 billion investment in world-class health, research and education infrastructure that will deliver expanded services and new models of care to the local community and other residents of NSW.



## Hospital Road north, upcoming construction and access changes:

### From Wednesday 23 March 2022, enabling works will occur on Hospital Road north

#### What works are planned?

Enabling works will include:

- vegetation and tree removal
- excavation works for services investigations and diversion of existing stormwater lines.

Fencing and water barriers will be installed to safely separate the work area from the public.

#### Access changes

Hospital Road north will be reduced to one lane and traffic control will be in place to safely manage both vehicles and pedestrians in the area.

Localised parking and signage changes will be in place during enabling works. Please refer to signage or use the campus carpark accessible via Barker Street and Easy Street.

### Hospital access will be maintained at all times

- Access to the Children's Hospital drop-off and Children's Emergency on High Street will be maintained at all times.
- 24/7 access to the Campus Carpark remains via Barker Street and Easy Street.
- Access to the campus loading docks, Francis Martin Drive and levels B2 and B3 of the campus car park will continue to be available from Barker Street and Hospital Road south.

### From Friday 8 April 2022, Hospital Road north will be closed and a construction zone established

#### What works are planned?

Construction activities will include:

- Staged site establishment with the installation of hoardings and fencing
- Modification of underground utilities and vegetation removal
- Use of plant and machinery, saw-cutting, and hand tools
- Excavation works for services investigations and installation of new underground power cables
- Concreting, temporary road and footpath works.

Enabling works will continue on Hospital Road north over the coming months followed by early works and main works. Early works will clear and prepare the site and main works will deliver the new hospital building.

#### Access changes

Vehicle access to Hospital Road north will be restricted to construction vehicles and emergency response vehicles only.

The signalised intersection on High Street and Hospital Road will remain operational for vehicles exiting the Sydney Children's Hospital High Street drop-off and for limited construction access supporting the works on Hospital Road north.

Pedestrian access on Hospital Road north will be restricted with the closure of the pedestrian footpath on the eastern side of the road. Emergency exits will be maintained with local pedestrian detours in place. Authority access to Hospital Road will also be maintained during the upgrades.

**We are working closely with the Sydney Children's Hospitals Network, campus emergency services, Randwick City Council and Authorities to coordinate and deliver this work.**



1800 571 866



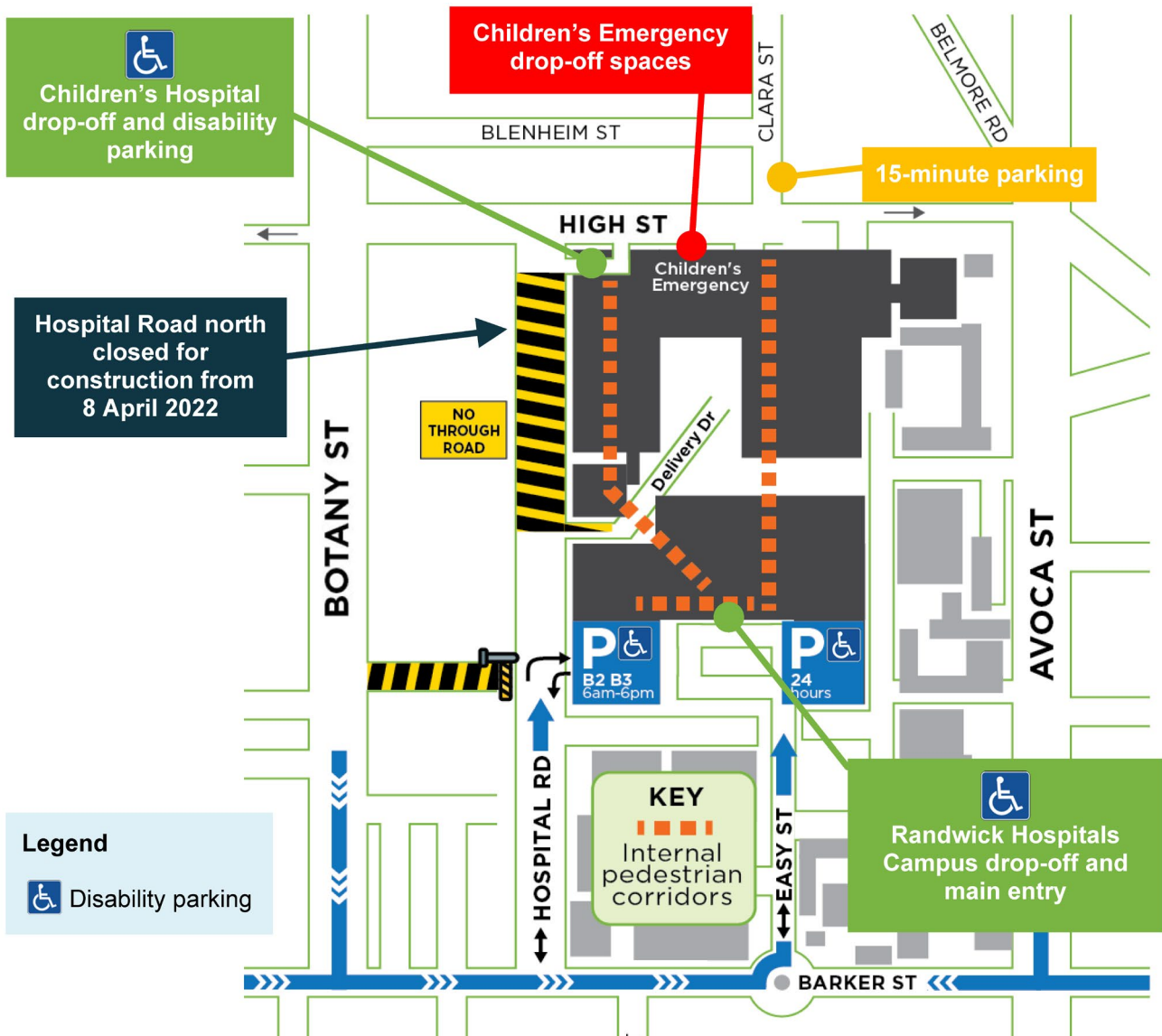
randwickcampusdevelopment@health.nsw.gov.au



randwickcampusredevelopment.nsw.gov.au



## Map showing location of Hospital Road north construction zone and alternative campus parking locations



### Changes to parking on Hospital Road north from Friday 8 April 2022

Parking on Hospital Road north will be **unavailable** to staff, patients and visitors after the road is closed in April. Please use alternative parking at the Randwick Hospitals Campus:

- The Randwick Hospitals Campus Main Entry and Campus Carpark remains accessible 24/7 via Barker Street and Easy Street offering drop-off, disability parking, lifts and undercover access to the Sydney Children's Hospital, Randwick
- Two disability parking spaces will be allocated at the Sydney Children's Hospital High Street drop-off before the road closure
- 15-minute parking is available on Clara Street, located near the Sydney Children's Hospital, Randwick High Street entrance
- Children's Emergency drop-off parking is available on High Street.



1800 571 866



randwickcampusdevelopment@health.nsw.gov.au



randwickcampusredevelopment.nsw.gov.au

## Why is Hospital Road being upgraded?

In the future Hospital Road north will provide underground ambulance access to the new Children's Emergency and a ground level pedestrian plaza for staff, patients, students and the community to enjoy above.



Artist impression of Hospital Road pedestrian plaza following the upgrades

## Construction Hours

Through March 2022, construction activities will take place between:

- 6am to 10pm, Monday to Friday
- 7am to 5pm on Saturday

Where possible, activities are scheduled during standard hours. At times, specific construction activities will be scheduled outside of these hours for traffic and safety reasons, due to either the location or impact of the works.

Concurrent works are being undertaken by Authorities on the northern section of Hospital Road. Notification of these works will be managed separately by the Authorities.

Activities are dependent on weather and site conditions and are subject to change. Information about activities that may affect local stakeholders is provided in advance to inform the community about upcoming works.

## Managing construction

We are committed to minimising the impact of our works where we can. All construction activities are carried out with the health and safety of the local community as our top priority. We endeavour to keep noise, dust and vibration to a minimum.

Some ways we do this include:

- Selection of tools, machinery and ways of working to reduce disruption
- Sequencing of works and respite periods for high impact works such as jackhammering and rock-breaking
- Noise and vibration monitoring and reporting
- Traffic control, signage and safety exclusion zones established to ensure worker, pedestrian and vehicle safety
- Mitigation measures in place to manage light spill
- Coordinating works to ensure continuity of hospital operations.

## What's happening next?

Over the coming months construction activity on the northern part of the Randwick Campus Redevelopment site will increase to deliver the Sydney Children's Hospital Stage 1 and Children's Comprehensive Cancer Centre. Staff and community will be kept up to date as works progress.

## Getting in touch

Staff are encouraged to reach out to their manager to discuss the upcoming work or any concerns. During after hour periods NUMs may also contact the Campus After Hours Nurse Manager.

Patients, families, visitors and the community are encouraged to contact the Randwick Campus Redevelopment team with any questions, feedback or complaints via:

- Phone 1800 571 866 (24hrs)
- Visit our project website [www.randwickcampusredevelopment.health.nsw.gov.au](http://www.randwickcampusredevelopment.health.nsw.gov.au)
- Email the team [randwickcampusredevelopment@health.nsw.gov.au](mailto:randwickcampusredevelopment@health.nsw.gov.au)



1800 571 866



[randwickcampusdevelopment@health.nsw.gov.au](mailto:randwickcampusdevelopment@health.nsw.gov.au)



[randwickcampusredevelopment.nsw.gov.au](http://randwickcampusredevelopment.nsw.gov.au)