

Construction is underway



From left to right: Richard Piper, AW Edwards; Trevor Danos AM, NSLHD Board Chair; Leisa Rathborne, Executive Director Northern Region, Health Infrastructure; Amanda Bock, A/Chief Executive, Health Infrastructure; First Nations performer, Tu Wai Macdonald; The Hon Chris Minns, NSW Premier; The Hon Ryan Park MP, Minister for Health and Minister for Regional Health; Adjunct Professor Anthony M. Schembri AM, Chief Executive, Northern Sydney Local Health District; Renae McCarthy, A/General Manager, Ryde Hospital; Dr Peter Roberts, Director, Emergency Services, Ryde Hospital.

Construction is underway on the \$526.8 million Ryde Hospital Redevelopment, with Premier Chris Minns and Minister for Health, Ryan Park joining members from the Northern Sydney Local Health District and the executive project team for a traditional sod-turning ceremony.

Sod-turning ceremony

Construction work on the redevelopment of Ryde Hospital has officially begun, marking a major milestone for the hospital's redevelopment.

The redevelopment will increase capacity and include new and expanded facilities, including a new emergency department, intensive care unit and operating theatres. The future hospital is designed to meet the health needs of this growing community, with more than 180,000 people expected to call the Ryde area home by 2041.



Artist's Impression (Main entrance, view from Denistone Road)

The sod-turn included a welcome to country and a smoking ceremony conducted by First Nations performers, Tu Wai Macdonald and Dennis Duncan, to honour the traditional owners of the land. This involved burning native plants to produce smoke, which is used for cleansing the site and creating a positive environment for the project and the future hospital and its visitors. This ceremony also recognises the importance of Aboriginal culture and acknowledges the significance of the site.



Dennis Duncan and Tu Wai Macdonald commence the traditional smoking ceremony

“This more than half-a-billion-dollar investment will deliver the health care that the growing community of Ryde needs now, and into the future,” Minister Park said.

“The hospital redevelopment will transform the health facilities for Ryde and surrounding suburbs, ensuring people can get the care they need close to home and provide staff with a modern place to work.”



From left to right: Tui Wai Macdonald; Trevor Danos AM, Board Chair, Northern Sydney Local Health District; The Hon Ryan Park MP, Minister for Health and Minister for Regional Health; The Hon Chris Minns MP, Premier of NSW

Construction works are being carried out by AW Edwards following the award of the main works building contract earlier this year.

The new hospital building is scheduled for completion in 2027, with the new main entry, demolition of former buildings and landscaping to take place in 2028.

What is a sod-turning ceremony?

A sod-turn ceremony officially marks the start of a construction project. During this ceremony, officials use ceremonial shovels to ‘dig up’ the first piece of soil on the construction site, also known as the turning of the first sod.

This is an official event attended by key decision makers of the project, such as government officials, project directors and the appointed contractor. It marks the beginning of construction for the project and celebrates the accomplishments achieved over the past four years of planning.



Members from NSLHD, Health Infrastructure and the extended project team

The project team is planning a staff and community event later in the year to celebrate the progress to date and acknowledge the valuable input from all the stakeholders involved.

We will keep subscribers, nearby residents and community members informed of the event details.

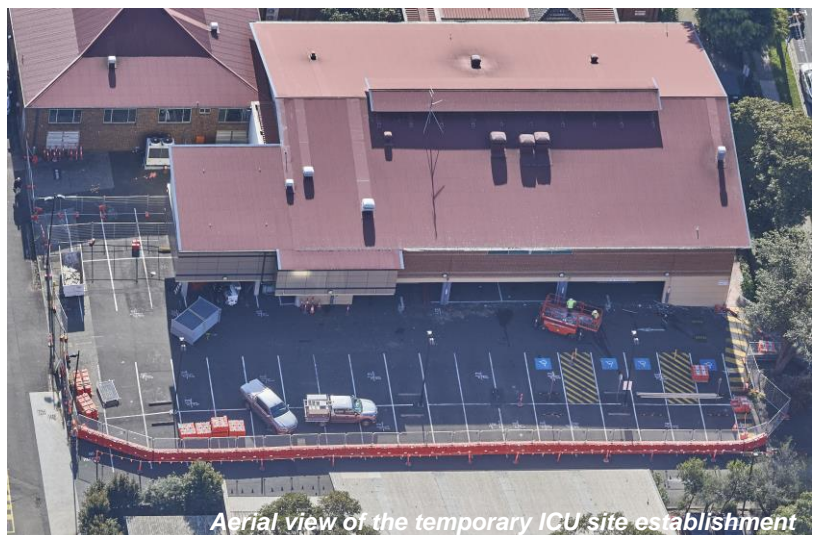
Construction works

Staging and temporary building works on campus have commenced. These works include the relocation of buildings and services to make way for the future hospital building.

These works allow Ryde Hospital to remain operational throughout the redevelopment and ensure the project delivery is safe, well organised and efficient.

The work includes the construction and relocation of a range of temporary facilities including:

- a new temporary Intensive Care Unit (ICU) and Critical Care Unit (CCU) inpatient unit
- a new surgical recovery ward in Trigg House
- changes to the Graythwaite building to accommodate a new temporary kitchen, linen and stores, along with a connection to Trigg House
- relocated loading dock, engineering and waste management facilities
- in-ground services and utilities
- project site offices.



The temporary facilities will be in place for the duration of the redevelopment.

Construction activities will be managed to ensure hospital operations continue safely, while noise and vibration impacts will be minimised.

Works will occur during standard construction hours from 7am to 6pm, Monday through Friday, and 8am to 1pm on Saturdays.

Limited work may occur out of hours, for example on Sundays or during the evening or early morning, to minimise impacts on hospital operations and to adhere to government planning conditions.

Access and parking changes on campus have been implemented to facilitate the works with signage and traffic controllers in place as needed.

Further information will be provided ahead of any future changes coming into effect.

Access and parking changes

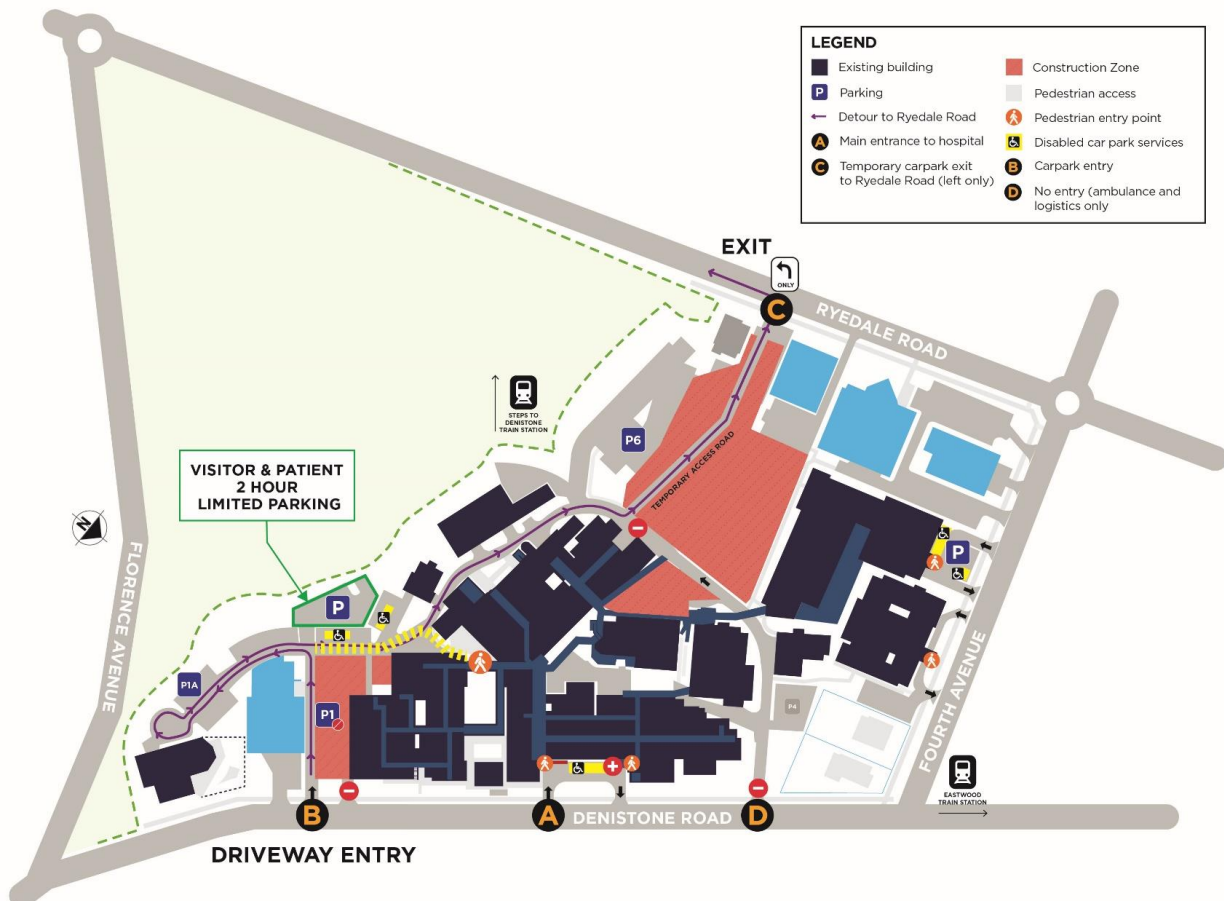
Last month, access to the hospital campus and parking changes were implemented to support construction staging and establish temporary facilities, freeing up space for the future hospital building.

The internal road is currently one-way. Vehicle entrance No. 1 (**B on the map**) on Denistone Road is now entry only and the outbound lane is temporarily closed. Entrance No. 2 (**D on the map**) on Denistone Road is closed to general traffic. The one-way exit is redirected to Ryedale Road (**C on the map**).

A fenced construction zone has been established in the P1 Carpark. General traffic, including parents dropping off at the childcare centre, should now exit via Ryedale Road.

Alternative parking is available behind the P1 Carpark and at other locations as shown on the campus map. Parking for patients and visitors is also available at the Graythwaite Building, accessed from Fourth Avenue. P6 is available for afternoon and evening staff.

Patients and visitors are encouraged to allow extra time to find parking and consider alternative travel arrangements where possible.



Safety is our number one priority. Traffic controllers and detour signage will be in place during works. Please take care when walking, driving and parking on campus and always follow the directions of traffic controllers and signage.

SCAN the QR code to view the Access and Car Parking Fact Sheet to learn more about the latest car parking access changes on campus.

