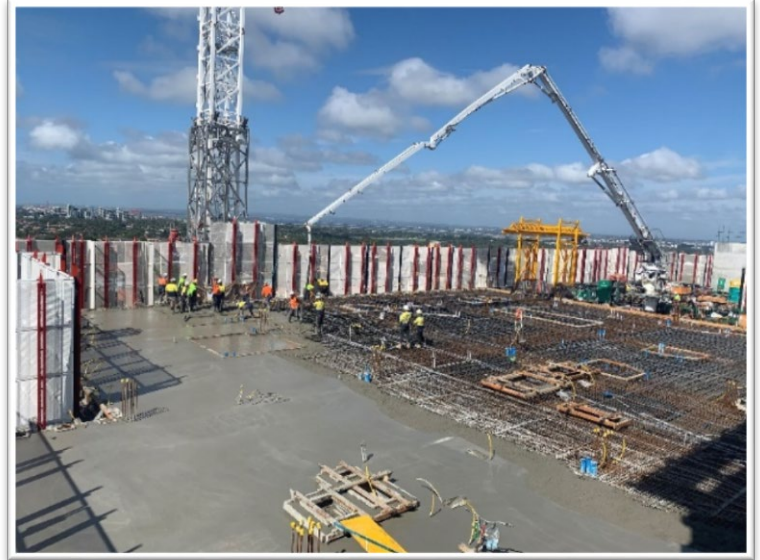


Construction continues on-site for the Prince of Wales Hospital Integrated Acute Services Building (IASB); the first stage of the Randwick Campus Redevelopment and the catalyst project for expanding the world-class health, research and education facilities at the Randwick Health and Innovation Precinct.

Key construction activities continuing throughout March include:

- IASB concrete pouring, structural works, façade installation and internal fit out
- Stage 3 Hospital Road works including piling and road pavement construction along Hospital Road (north)
- Minor works will continue along Hospital Road (south) to reinstate road pavements and footpaths
- Access to Delivery Drive via Hospital Road (south) from Barker Street
- Construction of a bulk oxygen storage facility on Francis Martin Drive and associated single lane closures
- Service utility investigations, relocations and upgrades along Delivery Drive
- Works on level B3 and B4 within the Hospital Campus car park



Major concrete pouring activity on the top levels of the IASB

Upcoming activities include:

Specific works will commence on Hospital Road, between **Monday 8 and Friday 26 March** to support infrastructure for the future electrical supply to the IASB. Works include cable pulling and installation of a transformer with additional activities outside the boundary within established safety exclusion zones. For traffic and safety reasons this work will occur outside standard work hours from **6:00pm to 5:00am** and take approximately three weeks to complete. This activity will be carried out under an Ausgrid authority approval.

Piling continues within the site compound along Hospital Road and Delivery Drive to support the lowering of Hospital Road. There will be some rock-breaking activities which may be disruptive at times. Measures are in place to manage noise including using lower noise generating equipment where possible and applying respite periods to rock breaking.

Rock breaking will only occur between the hours of 9:00am – 12:00pm and 2:00pm – 5:00pm. Bulk excavation will take approximately two weeks to complete.

Additional piling activity will occur south of the Hospital Road construction compound. The piles will provide support for the future installation of a three-level clinical link bridge that will connect the IASB to the existing hospital campus. To undertake this work, two out of hours deliveries of plant and equipment will occur weeks commencing **Monday 22 March and Monday 29 March between 2:00am and 4:00am**. It is a requirement of Transport for NSW that transportation of equipment of this size occurs out of hours. This activity is considered low impact and will take approximately one hour to complete.

Upgrades to the southern High Street footpath, between Botany Street and Hospital Road, are underway with exclusion zones established to support safe pedestrian movements in the area.

The Integrated Acute Services Building will reach a significant milestone in March 2021, with construction reaching its highest point. The occasion is marked by a Topping Out Ceremony and ceremonial placement of a tree on the top of the building.

Minimising construction impacts

We are committed to minimising the impact of our works where we can. All construction activities are carried out with the health and safety of the local community as our top priority. We endeavour to keep noise, dust and vibration to a minimum. Construction vehicles are not permitted to use Magill Street unless prior approval is granted. Vehicles accessing the Hospital Campus are permitted to use Magill Street. Thank you for your patience while we deliver the new hospital.

We encourage you to get in touch if you have any questions or feedback:

Community Contact 1800 571 866 (24hrs)

randwickcampusredevelopment@health.nsw.gov.au

www.randwickcampusredevelopment.health.nsw.gov.au

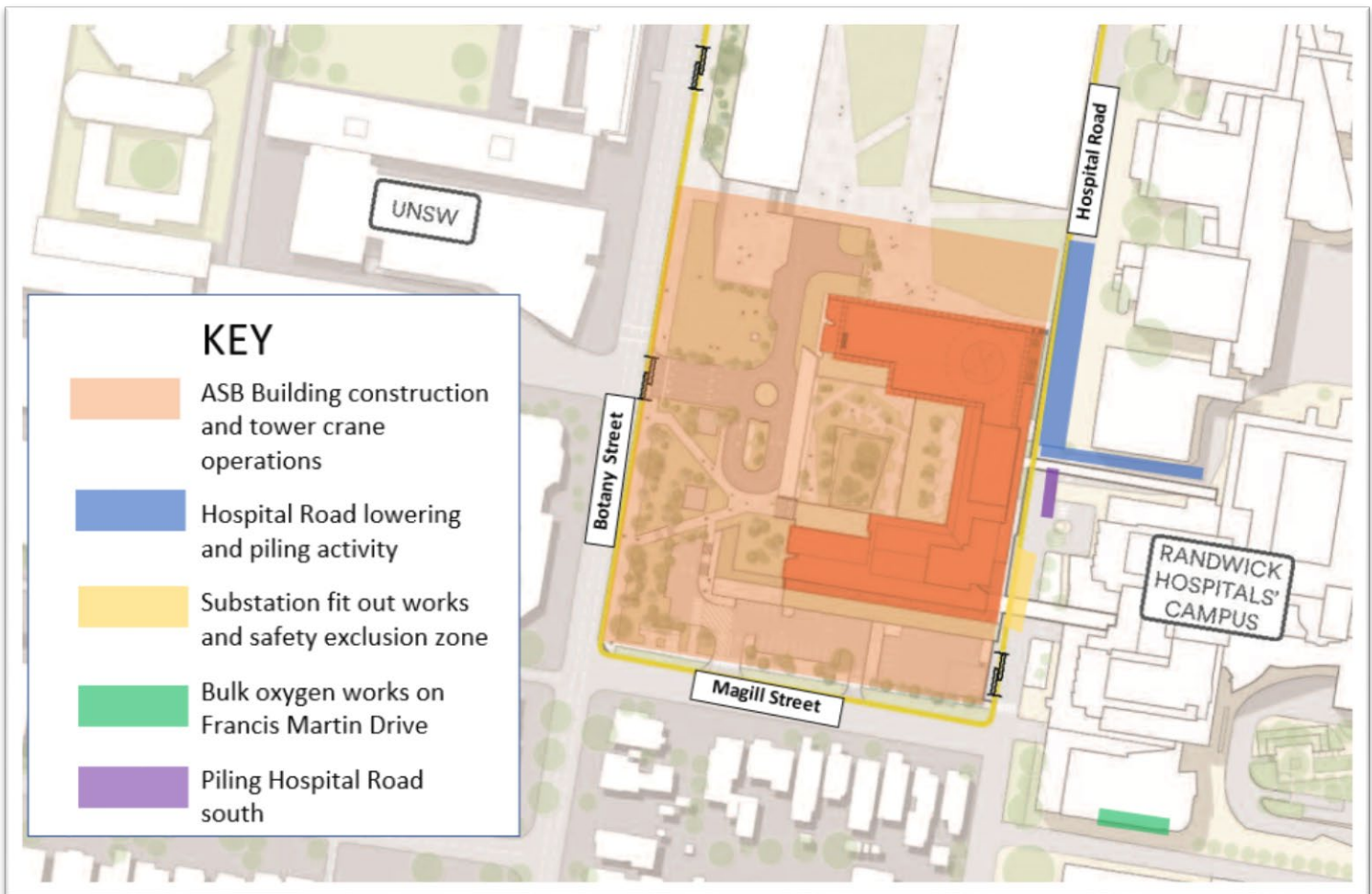
Return to standard construction hours – 25 March 2021

Extended hours have been a temporary measure to ensure worker safety and progress on the construction of essential health facilities during the COVID-19 pandemic. This approach was facilitated by a NSW Government Planning Order that enabled modifications to health facility projects. From Thursday 25 March 2021, the hours of construction will revert to the standard approved hours of Monday to Friday 7:00am to 6:00pm and Saturday 8:00pm to 5:00pm.

There will be no work on Sunday unless prior approval is granted. Other work may be planned outside of the approved construction hours to ensure the safety of workers, pedestrians and motorists, and to minimise impacts to local traffic and hospital access. Any out of hours work will be communicated in advance.

Measures remain in place to promote high standards of hygiene, sanitisation and cleaning.

Map of Construction Activity March 2021



Sign-up for e-updates! - Please register your email address and/or phone number so we can keep you up to date on upcoming works and changes in the area.

Phone: 1800 571 866 (24hrs) | Email: randwickcampusredevelopment@health.nsw.gov.au

We encourage you to get in touch if you have any questions or feedback:

Community Contact 1800 571 866 (24hrs)

randwickcampusredevelopment@health.nsw.gov.au

www.randwickcampusredevelopment.health.nsw.gov.au